

# How can Ottawa leverage administrative data to inform Local Planning?

Michael Haan and Elena Prokopenko

June 22<sup>nd</sup>, 2015

# The Brave New World of Administrative Data

- What is administrative data?
  - IMDB (LIDS-T<sub>1</sub> Taxfiler Database)
    - Census
    - Temporary Resident Database
  - ICARE
  - Other administrative files and linkages
    - Methadone treatment and prolific offenders database.
    - Medicare registry

# Definitions and complications

## 1. Primary Migration

- a. Those who moved to Ottawa first from another country.

But, what about:

- a. Those who intended to go elsewhere, or didn't intend to come to Ottawa in the first place?
- b. Those who didn't file taxes in Ottawa (or anywhere else in Canada) in their first year?
- c. Refugees?

## 2. Secondary Migration

- a. Those who moved to Ottawa from another part of Canada after arriving from another country.

But, what about:

- a. Students with family elsewhere in Canada?
- b. Those who didn't file taxes in Ottawa (or anywhere else in Canada) in their first year?
- c. Refugees?

## 3. What about Gatineau?

# About Ottawa's Immigrants

<b>Countries of Citizenship of Landing Cohorts to Ottawa, 2004-2012</b>					
2004-2006		2007-2009		2010-2012	
China	10%	China	9%	Haiti	10%
Philippines	6%	Philippines	8%	China	9%
Lebanon	5%	Lebanon	5%	Philippines	9%
India	5%	India	5%	India	4%
Iran	3%	USA	4%	Iraq	3%
USA	3%	Haiti	3%	Lebanon	3%
British Citizen	3%	British Citizen	3%	USA	3%
Haiti	3%	Iraq	3%	British Citizen	3%
Congo (DRC)	2%	Iran	3%	Somalia	3%
Pakistan	2%	Congo (DRC)	2%	Iran	2%
Other	57%	Other	56%	Other	50%
<i>Source: IMDB</i>					

# Secondary Migration to Ottawa

<b>Top 10 Previous CA/CMAs of Individuals Who Move to Ottawa and Corresponding Number of Secondary Migrants, 2004-2012</b>					
2004-2006 Landings		2007-2009 Landings		2010-2012 Landings	
Toronto	1320	Toronto	800	Toronto	205
Montreal	735	Montreal	445	Montreal	130
Gatineau	430	Gatineau	295	Gatineau	100
Vancouver	170	Vancouver	135	Vancouver	25
Calgary	160	Hamilton	75	Edmonton	20
Winnipeg	135	Winnipeg	70	Halifax	20
Edmonton	125	Calgary	65	Quebec	20
Kitchener	120	Kitchener	65	Charlottetown	20
London	120	Edmonton	60	Winnipeg	15
Hamilton	90	Halifax	55	Kitchener	15
Total from top 10	3405		2065		570
Overall Total:	4195		2625		665
Percentage of Immigrants Coming from Top 10 Cities:	81%		79%		86%

Source: IMDB

\*\*immigrants landed in the years specified, but moved any time between landing and 2012

# Secondary Migration *from* Ottawa

Top 10 CA/ CMA Destinations of Individuals Who Leave Ottawa and Corresponding Number of Migrants, 2004-2012					
2004-2006 Landings		2007-2009 Landings		2010-2012 Landings	
Toronto	515	Toronto	335	Toronto	110
Gatineau	320	Gatineau	200	Gatineau	80
Edmonton	140	Montreal	85	Edmonton	35
Montreal	120	Edmonton	60	Montreal	30
Calgary	120	Calgary	60	Calgary	25
Vancouver	105	Vancouver	60	Vancouver	15
Ontario Non-CA	90	Ontario Non-CA	40	Ontario Non-CA	15
Kitchener	45	Kitchener	30	Wood Buffalo	10
London	30	Hamilton	20	Kitchener	5
Kingston	20	London	15	Hamilton	5
Total from top 10	1505		905		330
Overall Total:	1780		1125		395
Percentage of Immigrants Coming from Top 10 Cities:	85%		80%		84%

*Source: IMDB*

\*\*immigrants landed in the years specified, but moved any time between landing and 2012

# Who is Leaving?

Citizenship Countries of Individuals Landing in Ottawa and Subsequently Leaving, 2004-2012					
2004-2006		2007-2009		2010-2012	
China	11%	China	13%	Philippines	8%
India	5%	India	6%	India	6%
Iran	4%	Iran	5%	Haiti	6%
Pakistan	4%	Lebanon	4%	China	5%
Philippines	3%	USA	4%	Iran	4%
Haiti	3%	British Citizen	4%	Bangladesh	4%
Lebanon	3%	Haiti	4%	Somalia	4%
USA	3%	Iraq	4%	Lebanon	3%
British Citizen	3%	Philippines	3%	USA	3%
Congo (DRC)	3%	Bangladesh	3%	British Citizen	3%
Other	58%	Other	50%	Other	56%

Source: IMDB

# How does Ottawa compare?

<b>Two-year Retention of Landing Cohorts, by City</b>		
	2004-2006	2007-2009
Ottawa	84%	86%
Edmonton	90%	89%
Calgary	91%	90%
Winnipeg	88%	90%

*Source: IMDB*

<b>Percentage of Canada's Immigrants* Recruited to Cities of Comparable Size</b>				
	Edmonton	Calgary	Winnipeg	Ottawa
2004-2006	2%	4%	2%	2%
2007-2009	3%	5%	3%	2%
2010-2012	4%	6%	4%	2%

NB: Not official numbers, includes only individuals in the IMDB with known place of residence and stated city of destination who filed taxes within one year of landing.

\*Filing for the first time within first year of landing.

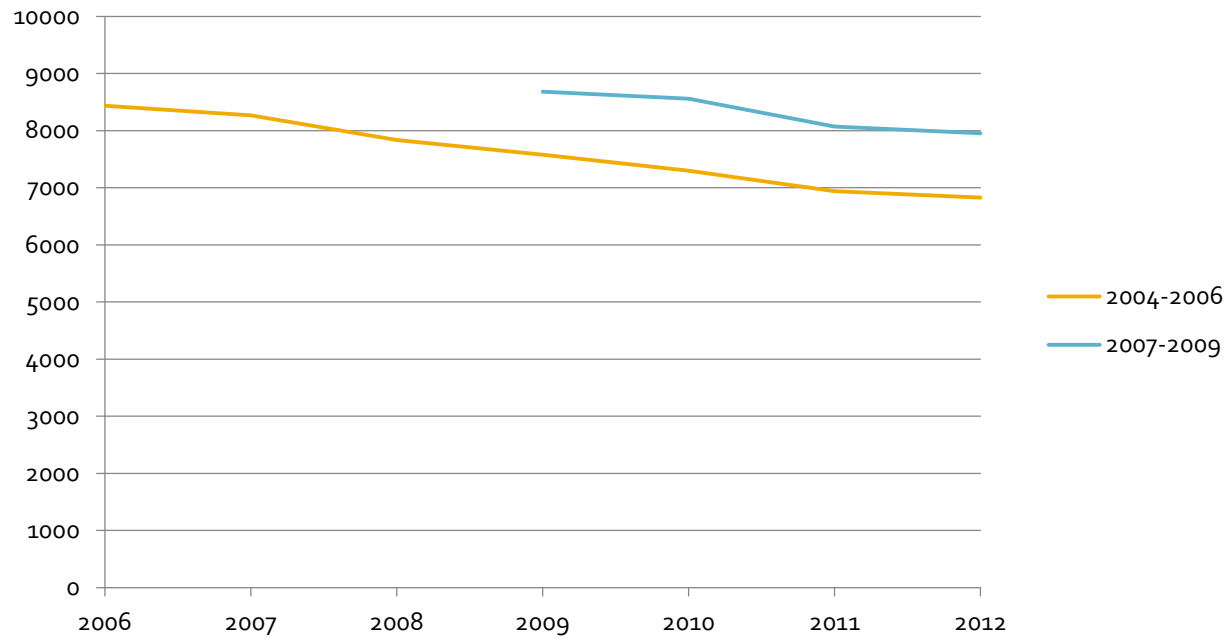
*Source: IMDB*

\*Defined as the percentage of the initial cohort still found in city two years after landing



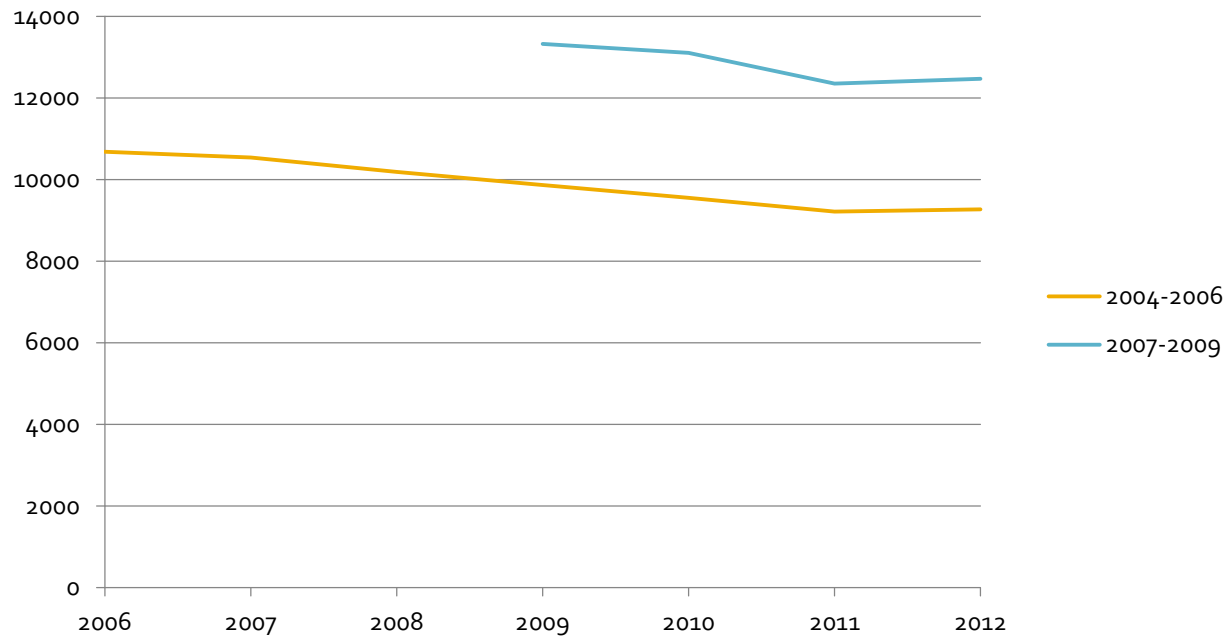
# Ottawa's Immigrant Retention

Over-time Retention of Landing Cohort in Ottawa



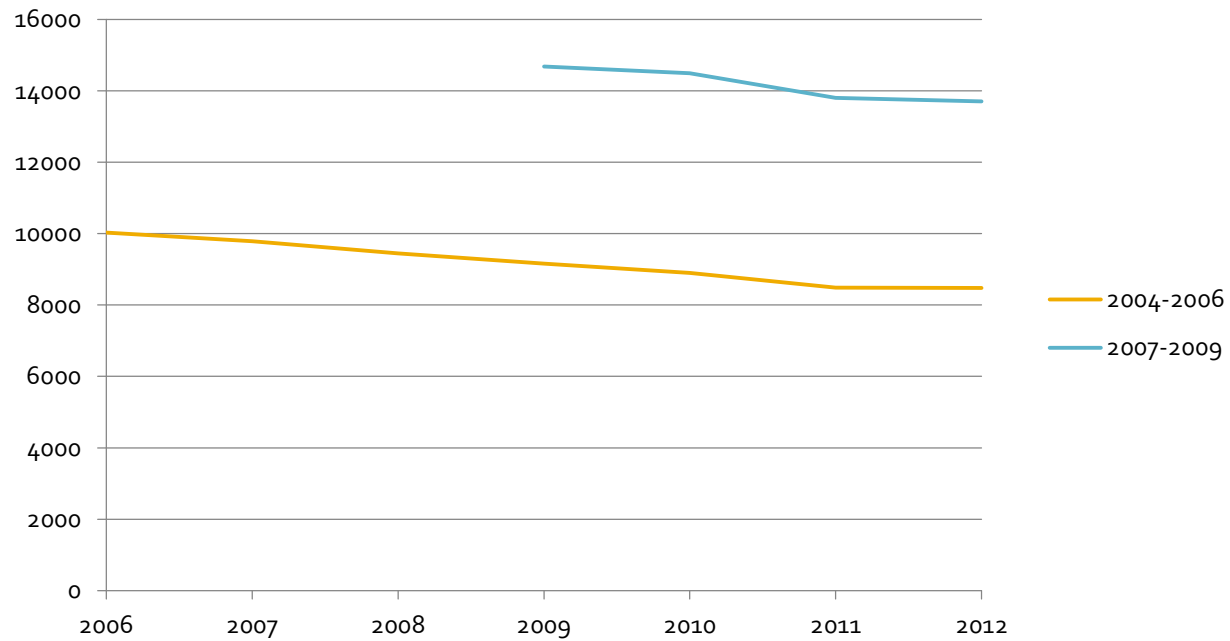
# Edmonton

## Over-time Retention of Landing Cohort in Edmonton



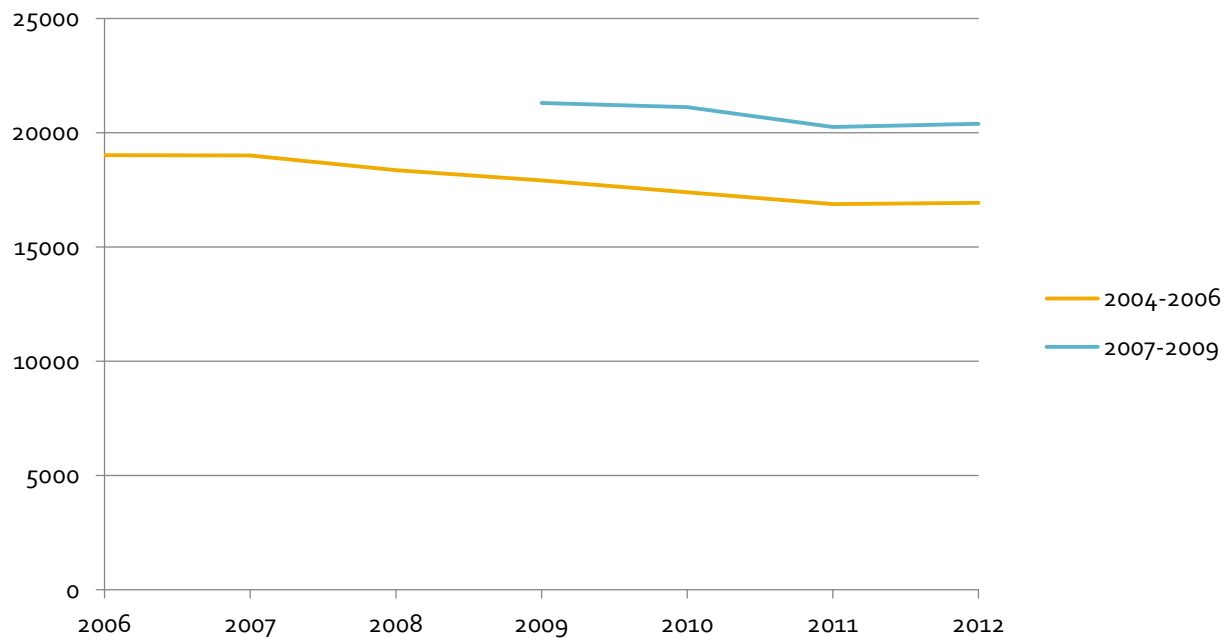
# Winnipeg

## Over-time Retention of Landing Cohort in Winnipeg



# Calgary

## Over-time Retention of Landing Cohort in Calgary



# Who is Leaving?

Description of Each Cohort of Immigrants Recruited to Ottawa				
		2004-2006	2007-2009	2010-2012
Sex	Female	56%	56%	55%
Age	15-24	18%	17%	15%
	25-34	37%	39%	36%
	35-44	25%	23%	25%
	45-54	11%	10%	12%
	55-64	4%	5%	5%
	65+	4%	5%	7%
Admission Class	Economic Class	36%	33%	25%
	Family Class	34%	35%	32%
	Refugee	22%	17%	24%
	Other	9%	15%	18%
Education at Arrival	Highschool or less	35%	35%	42%
	College	21%	21%	20%
	Bachelor Degree	29%	30%	26%
	Post-Graduate	14%	15%	13%
First Official Language Spoken	English	61%	64%	58%
	French	7%	8%	11%
	English and French	12%	12%	13%
	Neither Official Language	20%	16%	17%

N.B. Cohorts include only individuals who stated Ottawa as their city of destination, and file taxes in Ottawa within one year of landing,

Source: IMDB

Description of Individuals Who <b>Left</b> Ottawa, 2004-2012					
		2004-2006	2007-2009	2010-2012	
Sex	Female	53%	52%	52%	
Age	15-24	12%	12%	11%	
	25-34	42%	44%	51%	
	35-44	29%	28%	27%	
	45-54	10%	11%	9%	
	55-64	4%	2%	1%	
	65+	3%	2%	1%	
Admission Class	Economic Class	40%	44%	38%	
	Family Class	28%	28%	26%	
	Refugee	25%	16%	22%	
	Other	7%	12%	14%	
Education at Arrival	Highschool or less	33%	29%	29%	
	College	20%	18%	23%	
	Bachelor Degree	30%	33%	29%	
	Post-Graduate	16%	20%	18%	
First Official Language Spoken	English	61%	67%	66%	
	French	7%	7%	9%	
	English and French	14%	15%	14%	
	Neither Official Language	18%	11%	11%	
		<b>N</b>	1780	1125	395

N.B. Defined as individuals who are part of the Ottawa landing cohort, and subsequently file taxes in another city

# Immigrants' Economic Establishment in Ottawa

Median Income of Immigrants to Ottawa Landing in 2004-2006, by Year		
	Median After Tax Income	Median Total Income
2004	\$5,100	\$4,400
2005	\$8,900	\$7,800
2006	\$11,600	\$10,400
2007	\$16,200	\$15,000
2008	\$18,200	\$17,300
2009	\$20,000	\$19,600
2010	\$22,000	\$22,000
2011	\$23,000	\$23,000
2012	\$24,000	\$25,000
Constant 2012 dollars		
Source: IMDB		

Median Income of Immigrants to Ottawa Landing in 2007-2009, by Year		
	Median After Tax Income	Median Total Income
2007	\$6,400	\$5,800
2008	\$10,900	\$10,200
2009	\$13,200	\$12,400
2010	\$17,700	\$17,200
2011	\$19,200	\$19,300
2012	\$20,000	\$21,000
Constant 2012 dollars		
Source: IMDB		

Median Income of Immigrants to Ottawa Landing in 2010-2012, by Year		
	Median After Tax Income	Median Total Income
2010	\$7,900	\$7,600
2011	\$11,900	\$11,700
2012	\$13,300	\$13,400
Constant 2012 dollars		
Source: IMDB		

NB: Includes only Ottawa's original landed cohort, no secondary migrants

# Refugees – fast facts

- Refugees make up nearly 25% of Ottawa immigrant taxfilers that landed between 2010-2012.
- Ottawa has accepted a growing share of Canada's immigrants
  - 2004-2006: 3%
  - 2007-2009: 4%
  - 2010-2012: 5%
- Haitians makes up more than a quarter of Ottawa's recent refugee landings.
  - % Anglophone has declined, while % Francophone has increased.
- 52% of Ottawa's refugees came from top 10 countries in 2004-2006; 76% came from top 10 in 2010-2012.

# Conclusion

- The future of administrative data
  - The need for data development
  - Registries and the 'data cloud'